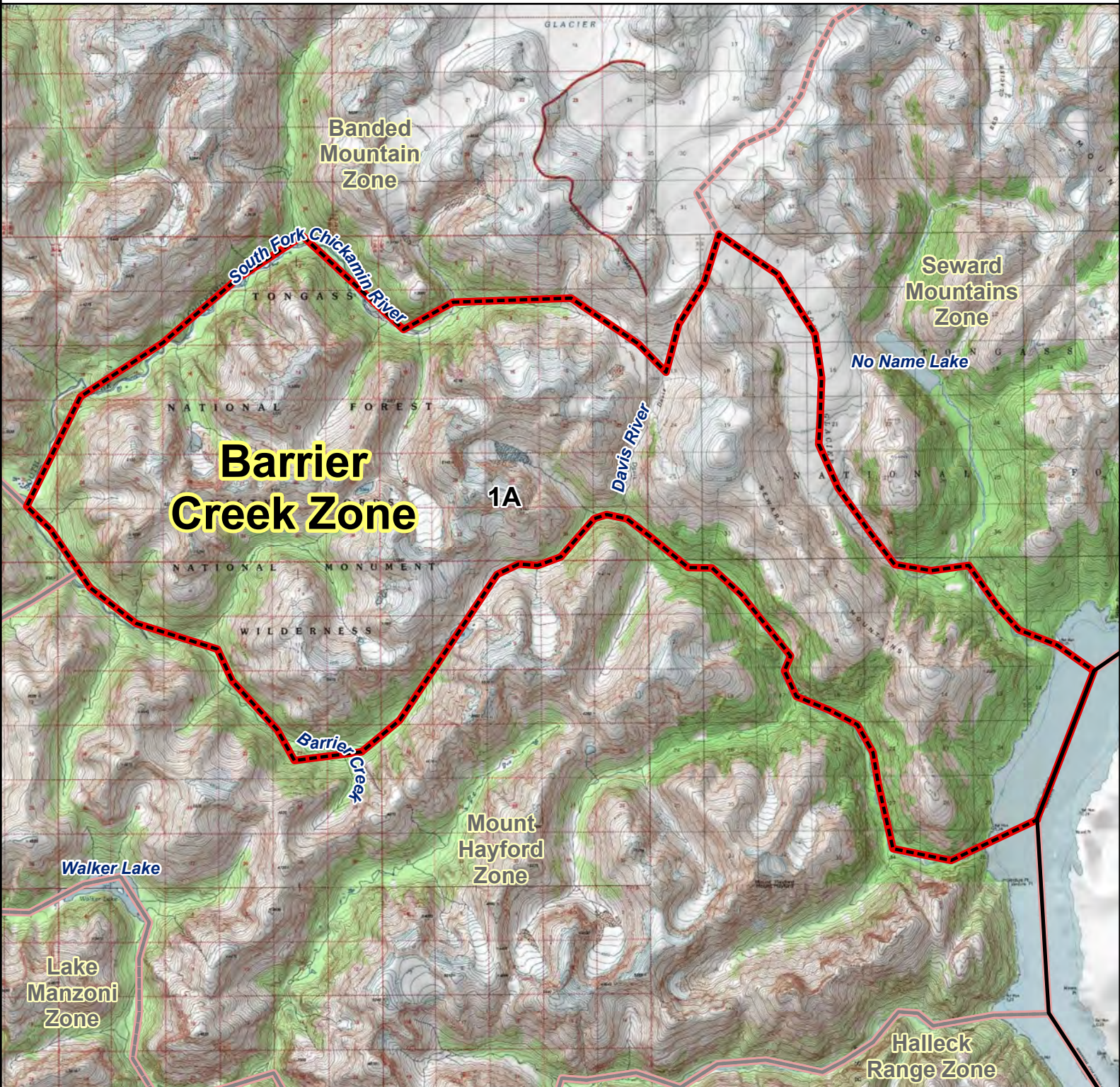


RG002 MOUNTAIN GOAT HUNT

Barrier Creek Zone



Barrier Creek Zone: Originating where the Davis River flows into the Portland Canal and meets the US-Canadian border, northwest along the Davis River to where it forks, then west along the valley drainage to where it goes through the lake at 3038 ft. elevation, southwest through the lake into the valley drainage that flows into Barrier Creek, northwest along Barrier Creek until it flows into the South Fork of the Chickamin River, northeast along the South Fork of the Chickamin River, east along the drainage from the Chickamin River over the ridge to the Davis River on the other side, north along the Davis River to where the head of the river meets Soule Glacier, then southeast along Soule Glacier, southeast along the outlet that flows from the glacier to where it flows into Portland Canal, and back to the point of origin.

